

# Asahidake & Tenninkyō Nature Letters

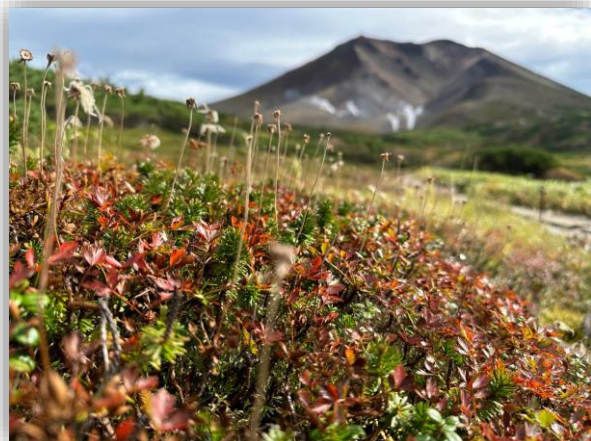
23 Sep 2023

Follow on social media!

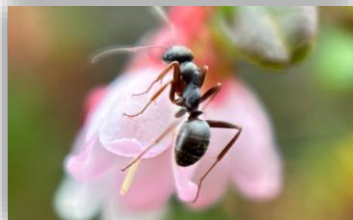
## Sugatami Trail

At 1.7km, most visitors can hike in an hour

It's getting cold in Sugatami while the fall comes. Little animals and plants are working hard as always. Insects that seek nectar, and Ezo Chipmunks that eat fruits. So that pollination can be done, fruit can be made, seed can be dispersed, and then flowers bloom. Places you might not usually notice are following the seasons to proceed the cycle of life. Let's take a close look at this tiny world when you visit!



Autumn leaves of Aleutian Avens and Mt. Asahidake



Lingonberry's flower with an ant



Ezo Chipmunk

## Alpine plants in Sugatami



**Ezo-Oyama-Rindou**  
(*G. t. var. j. f. montana*)



**Iwabukuro**  
(*Pennellianthus frutescens*)



**Oval-leaved Blueberry**

## We recommend you to bring

※Rainwear is recommended, mountain weather changes quickly.

「Flowers of Sugatami」 is on sell!

Flower guide



Gloves



Hat



Trekking poles



Water



Jacket



Hiking boots

## Asahidake Onsen

Trails • Alpine Botanical Garden • Onsen • Campsite



Old World swallowtail



Mt. Asahidake from the Onsen

## Tenninkyō

Hagoromo Waterfall • Columnar joint • Foot bath • Onsen

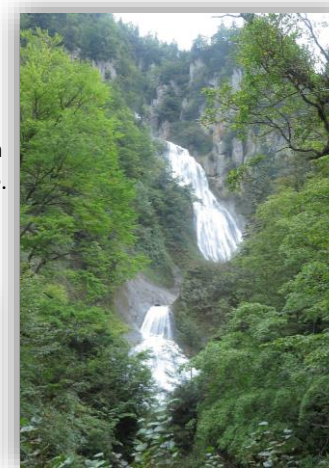
- Although the Hagoromo waterfall is the highest waterfall in Hokkaido, it's rather powerful waterfall but a gorgeous one.
- It raises lives with the flow of the water of the Daisetsuzan.
- The Japanese Crayfish, which is rated as Vulnerable on the red list and endemic to Japan, is also living in this water.

- In the chilling fall, please enjoy the water of Daisetsuzan by foot bath and hot spring.

★The temporary toilet is set in the Parking lot.



Japanese Crayfish



Hagoromo Waterfall

Ropeway Information



Asahidake ropeway



Daisetsuzan Nature School



Twitter



Facebook



Instagram

The Onsen is located in 500m below the Sugatami area. Season and ecology are slightly different here. The adult Old World swallowtail is often seen on the Sugatami, but the larva is not. The old world swallowtail that was born in the Onsen might make its way up to Sugatami.

Higashikawa protection society for Daisetsuzan national park 「Nature Protection Project」 Organizer/ Publisher : NPO Daisetsuzan Nature School